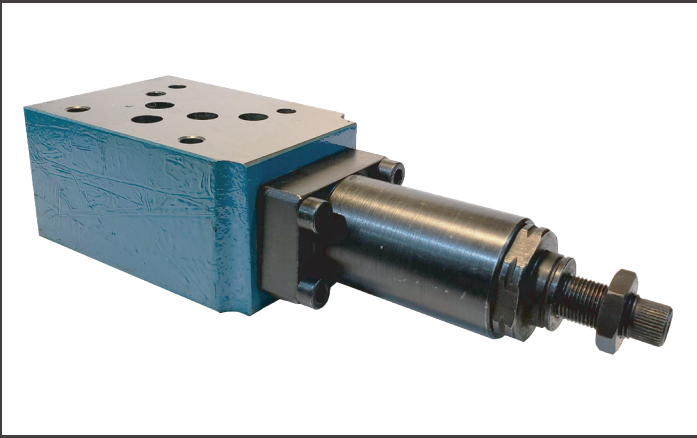


# GS-SERIES VALVES

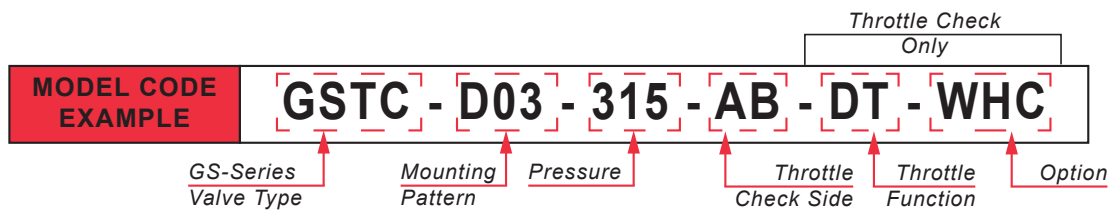


## Throttle & Double Throttle Check Valves

The GS Series Throttle and Double Throttle Valves limit flow in one direction and allow free return flow in the opposite direction by aligning two throttle checks symmetrically. This application is used to limit the main or pilot flow of one or two actuator ports.

- Sandwich Plate Design
- Carbon Steel
- D03 & D05 Mounting Patterns
- Meter-in & Meter-out Throttling
- Actuator Velocity Adjustment
  - Install between main valve and subplate
  - Limits main valve flow
- Pilot-Operated Directional
  - Install between pilot and main valve
  - Limits pilot valve flow

### Ordering Data - GS-Series Throttle & Double Throttle Check Valves



GS-SERIES VALVE TYPE	
CODE NO.	DESCRIPTION
<b>GSTC</b>	Throttle Check
<b>GSDTC</b>	Double Throttle Check

MOUNTING PATTERN	
CODE NO.	DESCRIPTION
<b>D03</b>	ISO 4401-3
<b>D05</b>	ISO 4401-5
CONTACT ELWOOD FOR ADDITIONAL SIZING OPTIONS	

WORKING PRESSURE	
CODE NO.	DESCRIPTION
<b>315</b>	4,568 PSI / 315 BAR

THROTTLE CHECK SIDE	
CODE NO.	DESCRIPTION
<b>AB</b>	Throttle Check on A & B Sides
<b>A</b>	Throttle Check on A Side
<b>B</b>	Throttle Check on B Side

*Throttle Check Only*

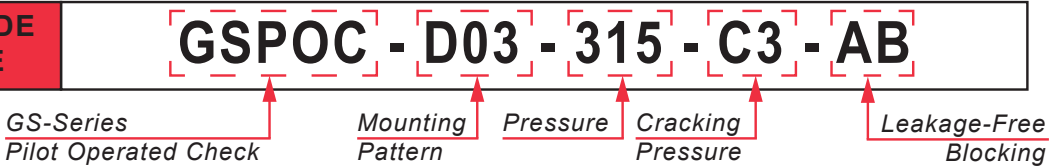
THROTTLE FUNCTION		OPTIONS	
CODE NO.	DESCRIPTION	CODE NO.	DESCRIPTION
<b>ST</b>	Supply Throttling	<b>WHC</b>	Corrosion Resistance
<b>DT</b>	Discharge Throttling		

# Pilot Operated Check Valve

The GS Series Pilot Operated Check Valve is a releasable check valve used for leakage-free blocking of one or two actuators.

- Sandwich Plate Design
- Carbon Steel
- D03 & D05 Mounting Patterns
- Various Cracking Pressures

## Ordering Data - GS-Series Pilot Operated Check Valve

<b>MODEL CODE EXAMPLE</b>	<b>GSPOC - D03 - 315 - C3 - AB</b>
	

MOUNTING PATTERN	
CODE NO.	DESCRIPTION
<b>D03</b>	ISO 4401-3
<b>D05</b>	ISO 4401-5
<i>CONTACT ELWOOD FOR ADDITIONAL SIZING OPTONS</i>	

WORKING PRESSURE	
CODE NO.	DESCRIPTION
<b>315</b>	4,568 PSI / 315 BAR

CRACKING PRESSURE	
CODE NO.	DESCRIPTION
<b>C1.5</b>	21 PSI / 1.5 BAR
<b>C3</b>	43 PSI / 3 BAR
<b>C6</b>	87 PSI / 6 BAR

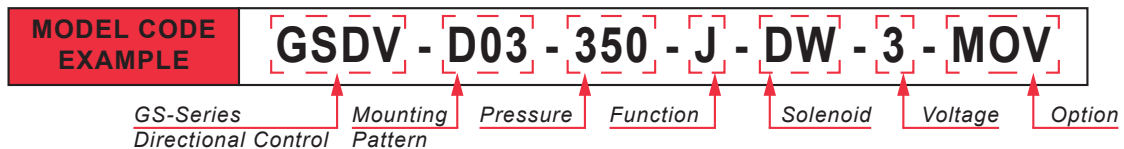
LEAKAGE-FREE BLOCKING	
CODE NO.	DESCRIPTION
<b>AB</b>	Blocking in A-Channel
<b>A</b>	Blocking in A-Channel
<b>B</b>	Blocking in B-Channel

## Directional Valve

The GS Series Directional Valve is a solenoid-actuated spool valve used for stopping, allowing, and changing the direction of fluid flow.


- 4/3, 4/2, or 3/2-Way Versions
- Carbon Steel
- D03 & D05 Mounting Patterns
- High-Powered Wet Pin Solenoid
- Optional Manual Override

### Ordering Data - GS-Series Directional Control Valve



MOUNTING PATTERN	
CODE NO.	DESCRIPTION
D03	ISO 4401-3
D05	ISO 4401-5
CONTACT ELWOOD FOR ADDITIONAL SIZING OPTIONS	

WORKING PRESSURE	
CODE NO.	DESCRIPTION
350	5,076 PSI / 350 BAR

SPOOL FUNCTION	
CODE NO.	DESCRIPTION
J	
CONTACT ELWOOD FOR ADDITIONAL FUNCTIONS	

SOLENOID	
CODE NO.	DESCRIPTION
DW	High-power wet-pin solenoid

VOLTAGE	
CODE NO.	DESCRIPTION
3	24 VDC
6	110/120 VAC 50/60 Hz
8	220/240 VAC 50/60 Hz

OPTION	
CODE NO.	DESCRIPTION
MOV	Manual Override

# Pressure Reducer Valve

The GS Series Pressure Reducer is a 3-way direct operated pressure reducing valve. Pressure is maintained at a reduced level in a circuit.

- Sandwich Plate Design
- Carbon Steel
- D03 & D05 Mounting Patterns
- Pressure reduction in A, B or P channels
- Optional Check Valve
- Pressure Ratings:
  - 25 bar (360 PSI)
  - 75 bar (1,100 PSI)
  - 150 bar (2,175 PSI)
  - 210 bar (3,050 PSI)

## Ordering Data - GS-Series Pressure Reducing Valve



MOUNTING PATTERN	
CODE NO.	DESCRIPTION
<b>D03</b>	ISO 4401-3
<b>D05</b>	ISO 4401-5
CONTACT ELWOOD FOR ADDITIONAL SIZING OPTONS	

WORKING PRESSURE	
CODE NO.	DESCRIPTION
<b>210</b>	3,045 PSI / 210 BAR

SECONDARY PRESSURE	
CODE NO.	DESCRIPTION
<b>S75</b>	1,087 PSI / 75 BAR
<b>S150</b>	2,175 PSI / 150 BAR

PRESSURE REDUCTION	
CODE NO.	DESCRIPTION
<b>A</b>	Reduction in A-Channel
<b>B</b>	Reduction in B-Channel
<b>P</b>	Reduction in P-Channel

OPTIONS	
CODE NO.	DESCRIPTION
<b>CH</b>	Check Valve Option



Elwood Fluid Power is proud to provide high pressure hydraulic valves and systems for water and other low viscosity applications. Traditionally, Elwood custom valves have been used in steel mills, aluminum mills, and petrochemical facilities across the world!

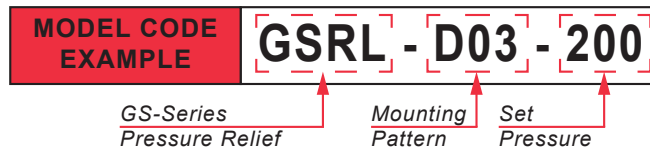
Today Elwood is expanding its markets into custom high pressure water or low viscosity applications across many industries. Contact us today to start talking with our team!

## Pressure Relief Valve

The GS Series Pressure Relief Valve is a direct operated relief that limits pressure in a hydraulic system.

- Sandwich Plate Design
- Carbon Steel
- D03 & D05 Mounting Patterns
- Screw-in Cartridge Design

### Ordering Data - GS-Series Pressure Relief Valve



MOUNTING PATTERN	
CODE NO.	DESCRIPTION
<b>D03</b>	ISO 4401-3
<b>D05</b>	ISO 4401-5
<i>CONTACT ELWOOD FOR ADDITIONAL SIZING OPTONS</i>	

SET PRESSURE	
CODE NO.	DESCRIPTION
<b>200</b>	2,900 PSI / 200 BAR

## ELWOOD CORPORATE POLICY STATEMENT

It is the policy of Elwood to provide our customers with products that meet or exceed their expectations for performance, reliability and safety while ensuring compliance with applicable laws and regulations, and to continually improve all aspects of our business.

